



5-Year Plan (2014 to 2019) EASTERN KLICKITAT Conservation District

For More Information Contact: Jim Hill, Mgr (509) 773-5823, klickcon@gorge.net



Organization of the EASTERN KLICKITAT Conservation District

A political subdivision of the State of Washington – authorities, powers and structure contained in RCW 89.08.

- Established in 1943, EKCD has a positive history of conservation in Klickitat County. Our ultimate goal has always been and continues to be, cooperation with landowners to provide the most on-the-ground conservation for the dollars spent. As conservation practices progress and change, we have adopted new technology to provide the best in conservation to our cooperators.

Function of the EASTERN KLICKITAT Conservation District

To make available technical, financial and educational resources, whatever their source, and focus or coordinate them so that they meet the needs of the local land manager with conservation of soil, water and related natural resources.

We Serve & Why

- Landowners, users of natural resources, individuals & organizations interested in natural resource issues within EKCD.
- EKCD has a legal responsibility under 89.08
- We are the most effective conduit and buffer for federal and state programs to the local level
- We are the most effective agency to help people achieve their resource conservation goals

Mission of the EASTERN KLICKITAT Conservation District

The mission of the Eastern Klickitat Conservation District is to improve, conserve, and promote the wise use of natural resources by providing technical, financial, educational, and research assistance for landowners, users of natural resources, individuals & organizations interested in natural resource issues within the boundaries of EKCD.

Vision of the EASTERN KLICKITAT Conservation District

By 2019:

- EKCD will have established a reliable, stable source of income
- Klickitat CD will have provided the opportunity for land owners, visitors, and operators to visit our Riparian buffers in the lower Rock Creek basin will be improved
- EKCD will be in a building of our own along with partners
- Eastern office and learn more of what we do
- EKCD will partner with and be a resource for other agencies on water quality and land use issues – Conservation districts have a better insight for local concerns than bureaucracies located somewhere else
- Promote new, more efficient, agricultural practices including precision agriculture for natural resource conservation
- Have influence on agencies and organizations policies effecting EKCD cooperators
- Promote wildlife habitat by encouraging habitat improvements through cost share programs
- District will be working with local fire districts on fire prevention practices
- Have secured conservation easements

- Will develop support group for new farmers and young people wanting to be part of community
-

Values of the EASTERN KLICKITAT Conservation District

We believe in:

- Grass roots conservation efforts
 - Wise use of natural resources
 - Cooperative, incentive based programs
 - Assisting landowners in being proactive with natural resource issues
 - Helping landowners comply with regulatory conservation efforts
 - Partnership agreements with governmental agencies
 - Good conservation
 - Treating everyone equitably and in a positive manner
 - Being frugal with funds
 - Not being intrusive on private land rights
 - Successful and beneficial projects
 - Saying what we are going to do - and doing what we say
 - Informing people so they understand landowner commitments and the CD obligations to conservation efforts
 - Use of natural resources wisely for a living and income
 - Locally led conservation
 - Not a being a regulatory agency – nor do we intend to be
-

Land Manager Needs:

- Information
 - Financial assistance...cost share...e.g. grazing, CRP takeout,
 - Communications...timely notification of deadlines
 - Funding for irrigation efficiencies, assistance with tax issues
 - Assistance navigating through programs... e.g. grazing management programs, other
 - Local land owner understanding and perspective on programs
 - Knowledge of programs available
 - Information on new technologies and innovations
 - Agency support
 - People that are trying something different have support
 - Adequate training and clarification on practices implementation
-

Natural Resource Data & Information: See Appendix A

Land Use in the Rock/Glade Basin:

- Agriculture 40%
 - Urban 2%
 - Water 4%
 - Forest 5%
 - Range 49%
- Yearly rainfall averages 8 inches. The landscape is composed of layer upon layer of basalt, and remnants of the Pleistocene lake basins. The typical soils are deep gravelly loam to silty loam. Potential natural vegetation is big sagebrush, bitterbrush, bluebunch wheatgrass and Idaho fescue. (WA Water Quality Management Plan Vol 1)

Critical Geographic Areas: (attached map Appendix B)

- Rock Creek watershed
- Eastern edge of EKCD – low rainfall 8” and under area
- Alder Creek watershed
- Pine Creek watershed

Priority Natural Resource Conservation Needs & Geographic Areas:

| Priority Natural Resource Conservation Need | Geographic Area |
|--|----------------------|
| Farmland Preservation/Conservation Easements | Rock Creek |
| Water Quality | Rock Creek drainage |
| Soil Quality & Erosion | Glade Creek drainage |
| Water Use/ Irrigation Efficiencies | Alderdale area |
| Rangeland, Forest & Habitat Management | Upper watersheds |
| Wildfire Prevention | District wide |
| Public Education & Outreach | District wide |
| District Operations | District wide |

Stewardship in all above
Trust of Government

Criteria for Selecting Conservation Priorities:

- Pressure from land sales and developers – loss of grazing and farmland
- Water quality issues – elevated temperature in Rock Creek – and Ecology and Tribal influences
- Wind energy wildlife mitigation
- Producers adopting new technologies
- Potential for habitat projects in all watersheds

Priority Natural Resource Conservation Needs Measures of Success and Goals:

| Natural Resource Conservation Need | Measures of Success | Goal |
|---|---|--|
| Farmland Preservation /Conservation Easements | <ul style="list-style-type: none"> • # of people contacted • # of contracts • Amount of acquisition | <ul style="list-style-type: none"> • By 2019 have demonstrated increase in number of people contacted, number of contracts completed, and the related amount of acquisition |
| Water Quality | <ul style="list-style-type: none"> • Water standards (TMDL, 303d listing) • Practices installed and effect | <ul style="list-style-type: none"> • By 2019 have demonstrated increase in practices installed, and positive effect on the water quality measurements |
| Soil Quality & Erosion | <ul style="list-style-type: none"> • Practices installed • Amount of erosion controlled | <ul style="list-style-type: none"> • By 2019 have demonstrated increase in practices installed, # of operators participating in Soil Condition Index analysis, and related decrease in soil erosion |
| Water Use/ Irrigation Efficiencies | <ul style="list-style-type: none"> • Amount of trust water in water bank • Practices installed • Acres of conversion | <ul style="list-style-type: none"> • By 2019 have demonstrated increase in amount of trust water in water bank, practices installed, and acres of conversion to more |

| | | |
|--|--|---|
| | | efficient irrigation systems |
| Rangeland, Forest & Habitat Management | <ul style="list-style-type: none"> Practices installed Acres of plant health improvement Populations of desirable wildlife # of acres managed | <ul style="list-style-type: none"> By 2019 have demonstrated increase in acres of plant health improvement, practices installed, number of acres management and related populations of desirable wildlife in habitat improved |
| Wildfire Prevention | <ul style="list-style-type: none"> Acres of man caused fires Acres of fire wise & fire prevention treatment Practices installed | <ul style="list-style-type: none"> By 2019 have demonstrated increase in acres of Firewise and fire prevention treatment, practices installed, and related decrease in acres of man caused fires |
| Public education & outreach | <ul style="list-style-type: none"> Number of events and related attendance % of District Cooperators contacted People served | <ul style="list-style-type: none"> By 2019 have demonstrated increase in number of events and related attendance leading to a larger percentage of District Cooperators contacted and served |
| District Operations | <ul style="list-style-type: none"> Partner agreements \$ leveraged # of clients served per funding spent # of acres treated per funding spent Good Standing checklist | <ul style="list-style-type: none"> By 2019 have demonstrated increase in partner agreements, funding leveraged, number of clients served per funding spent; number of acres treated per funding spent Have all 'pass' Good Standing checklist |

Milestones, Timeline & Actions

Natural Resource Conservation Need: Farmland Preservation/Conservation Easements

Measurable Goal:

By 2019 have demonstrated increase in number of people contacted, number of contracts completed, and the related amount of acquisition

| Milestones | Timeline | Actions |
|-------------------------------------|-------------|---|
| Grant Applications delivered to RCO | May 1, 2014 | <ul style="list-style-type: none"> Grant written Coordination between WDFW, Commission, EKCD Attend RCO board meetings |
| Winning grant proposal | Dec 2014 | <ul style="list-style-type: none"> Present the proposal to scoring committee |
| Funded grants | 7.1.15 | <ul style="list-style-type: none"> Attain legislative support |
| Purchase and sales agreement | 8.31.15 | <ul style="list-style-type: none"> Negotiate with seller |
| Easement developed | 8.31.15 | <ul style="list-style-type: none"> |

| | | |
|------------------------------------|-------------|---|
| Imrie Easement Appraisal completed | Spring 2014 | <ul style="list-style-type: none"> • Coordination with scoring process |
| Imrie Easement Negotiated | | <ul style="list-style-type: none"> • Develop a contract • Get approval to proceed |

Natural Resource Conservation Need: Water Quality

Measurable Goal:

By 2019 have demonstrated increase in practices installed, and positive effect on the water quality measurements

| Milestones | Timeline | Actions |
|---|--------------|--|
| Funding and completing ongoing water quality monitoring | Through 2016 | <ul style="list-style-type: none"> • Secure grants for ongoing water quality projects • Maintaining the water quality monitoring sites for continuity in all watersheds • Add additional Rock Creek sites if conservation easements are awarded |
| Install and operate up to three stream flow gage stations | By 2016 | <ul style="list-style-type: none"> • Take over operation of existing Highway 8 station • Squaw Creek and Bickleton highway stations • Maintain rating curve development |
| Control aquatic and invasive species at mouth of Rock Creek | By 2016 | <ul style="list-style-type: none"> • By 2016 planning process completed including all interested and effected parties...pending grant approval • By 2017, apply for implementation funds |
| BMPs installed | By 2019 | <ul style="list-style-type: none"> • Exclusion fencing and off-site watering facilities in all watersheds |
| Riparian Plantings | By 2019 | <ul style="list-style-type: none"> • Project with land owner and student involvement • Partner with other agencies and programs...e.g. county |

Natural Resource Conservation Need: Soil Quality & Erosion

Measurable Goal:

By 2019 have demonstrated increase in practices installed, # of operators participating in Soil Condition Index analysis, and related decrease in soil erosion

| Milestones | Timeline | Actions |
|---|----------|--|
| 80% of cropland in district would have conservation practices installed | By 2019 | <ul style="list-style-type: none"> • Work with land owners/operators on services and programs available • Continue to work on the Local Work Group regarding making this a high priority • Review cost share programs to make sure they fit with land owner needs and new technology • Meet with committee of 70 on conservation needs • Continue the smaller projects technical assistance and implementation • Develop photo points program for rangeland including training for operators |
| NRCS Natural Resource Assessment | By 2019 | <ul style="list-style-type: none"> • Work with NRCS staff to determine effects monitoring |

| | | |
|-------------------------------|--|--|
| would show progress completed | | |
|-------------------------------|--|--|

Natural Resource Conservation Need: Water Use/ Irrigation Efficiencies

Measurable Goal:

By 2019 have demonstrated increase in amount of trust water in water bank, practices installed, and acres of conversion to more efficient irrigation systems

| Milestones | Timeline | Actions |
|---|-----------|---|
| Staffing for water use and irrigation efficiencies work | Oct 2015 | <ul style="list-style-type: none"> • Workload analysis of staffing needs • Consider consultant from local area to provide technical assistance |
| Identify and contact all irrigation users | June 2016 | <ul style="list-style-type: none"> • Determine who the irrigators are and find out what their needs are • Participate in the power company meeting on energy needs • Assist vineyard owners with policy influence for qualifying for programs • |
| Identify and contact non-irrigation water consumers | Dec 2016 | <ul style="list-style-type: none"> • Determine who the non-irrigation water consumers are and find out what their needs are |
| Work with local water conservancy board | Dec 2018 | <ul style="list-style-type: none"> • Look at water rights issues and needs • Develop EKCD policy position on water use and related property issue |
| Legislative action | Dec 2019 | <ul style="list-style-type: none"> • Influence Ecology workload priorities for water issues in EKCD |

Natural Resource Conservation Need: Rangeland, Forest & Habitat Management

Measurable Goal:

By 2019 have demonstrated increase in acres of plant health improvement, practices installed, number of acres management and related populations of desirable wildlife in habitat improved

| Milestones | Timeline | Actions |
|---|-------------|---|
| Contact with all forest land owners with over 100 acres | By Dec 2014 | <ul style="list-style-type: none"> • Make aware of new beetle issue on forest lands • Make aware of EQIP funding available for forest, range, habitat practices |
| People that are interested in the rangeland, forest, habitat programs result in Xx acres enrolled | By Dec 2015 | <ul style="list-style-type: none"> • Make aware of the various programs and options • Assist with sign up in programs |

Natural Resource Conservation Need: Wildfire Prevention

Measurable Goal:

By 2019 have demonstrated increase in acres of Firewise and fire prevention treatment, practices installed, and related decrease in acres of man caused fires

| Milestones | Timeline | Actions |
|--|-------------|--|
| Contact all people in district interested in wildfire prevention | By Dec 2014 | <ul style="list-style-type: none"> Contact fire districts for assistance with promoting the wildfire prevention practices Coordinate services and activities with fire districts and cooperators |

Natural Resource Conservation Need: Public Education & Outreach

Measurable Goal:

By 2019 have demonstrated increase in number of events and related attendance leading to a larger percentage of District Cooperators contacted and served

| Milestones | Timeline | Actions |
|--------------------------------|----------|---|
| Educate the public within EKCD | Annually | <ul style="list-style-type: none"> At annual meeting use hour to solicit needs of land owners – attendees Prepare 2 news articles for print or radio each year Establish email list serve for sending education materials Develop and provide a synopsis of available conservation programs |

Natural Resource Conservation Need: District Operations

Measurable Goal:

- By 2019 have demonstrated increase in partner agreements, funding leveraged, number of clients served per funding spent; number of acres treated per funding spent
- Have all 'pass' Good Standing checklist

| Milestones | Timeline | Actions |
|--|-----------|---|
| Ag Services Center | July 2014 | <ul style="list-style-type: none"> Make a decision on whether to build or rent Select Location |
| Sustainable Funding Sources Identified | | <ul style="list-style-type: none"> Examine where mitigation funding is going Have a 'shovel' ready project list |

Staffing Needs: Met by contracting with Central Klickitat Conservation Dist.

- District Manager
- Administrative Assistant
- Technical Position #1 – water quality

- Engineer
- Engineer Assistant
- Technical Position #2 – generalist
- Information – Education (part time or include in Tech position #2 or Admin Ass't)

Potential New: workload analysis

- Ask existing employees if they want to increase hours
- Another engineer
- Easement coordinator (potential shared)
 - Writing grants, mitigation proposals, real estate expertise

Annual Budget Needs

| | |
|--------------------------|-----------|
| Admin Supplies | \$130 |
| Fuel | \$ |
| Professional Svcs | \$5,000 |
| Communications | \$650 |
| Travel Expenses | \$1,200 |
| Election Advert | \$150 |
| Insurance | \$3,000 |
| Dues & Registration | \$5,000 |
| Equip Purchase | \$900 |
| Contracted Services | \$96,000 |
| General Supplies | \$100 |
| Gen'l Ops Goods for Sale | \$10,000 |
| Travel | \$1,000 |
| General Advert | \$350 |
| Cost Share/Projects | \$116,270 |
| Cost Share | |
| | \$239,750 |
| TOTAL EXPENSES: | |

Use of Strategic Long Range Plan:

- For grant proposals
- Annual plan of work development
- Employee requirements
- Use with elected officials
- Public information

Washington Conservation Districts assisting land managers with their conservation choices



Appendix A
Natural Resource Data and Information

Eastern Klickitat CD & Central Klickitat CD County Resource Assessment

“A Starting Point”

Amanda Ettestad
NRCS District Conservationist

State Resource Assessment Background

- National direction to develop state resource assessment as a basis for funding and time allocations
- Partners and local work groups provided input from 2009-2010
- 2011 published WA NRCS SRA, Updated in 2013
- South Central LWG submits priorities based on WA NRCS SRA

South Central LWG Priorities FY2014

EQIP funding in South Central LWG area is used for the set priorities:

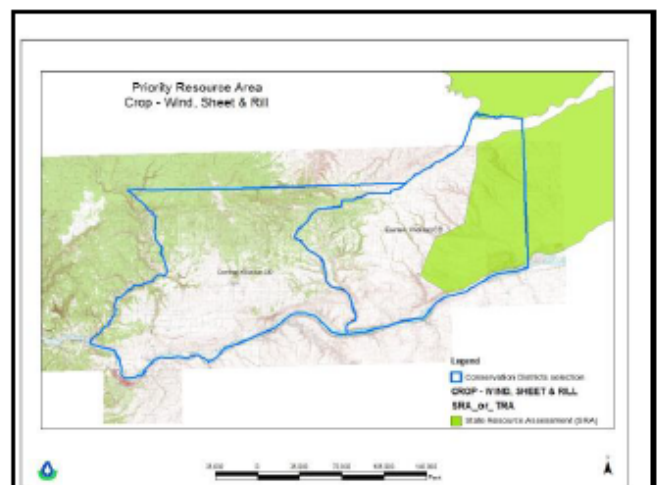
- CROP – Insufficient Water – Inefficient Use of Irrigation Water
- CROP – Soil Erosion – Sheet, Rill and Wind erosion
- PASTURE – Insufficient Water – Inefficient Use of Irrigation Water
- FOREST – Degraded Plant Condition – Undesirable plant productivity
- RANGE – Degraded Plant Condition – Undesirable plant productivity
- OTHER ASSOCIATED AG LAND – Water Quality Degradation – Excess Nutrients in Surface & Ground Waters

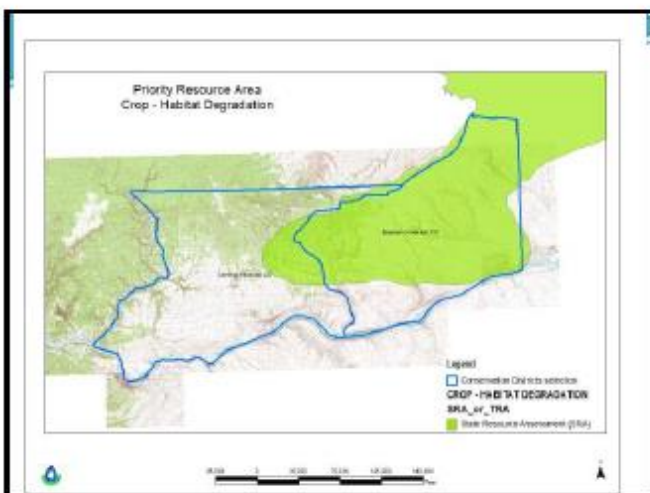
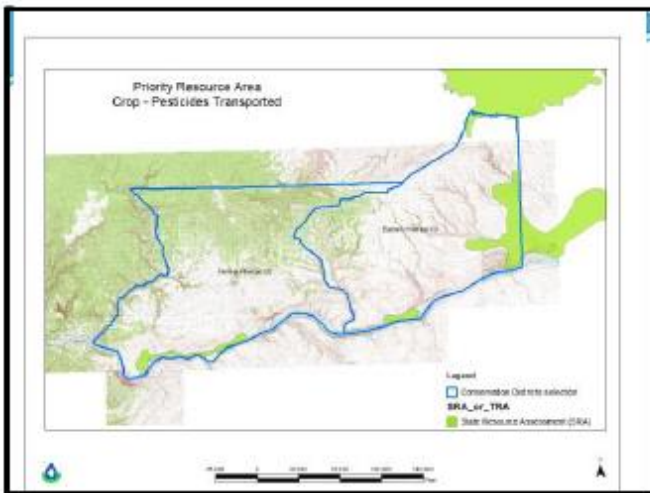
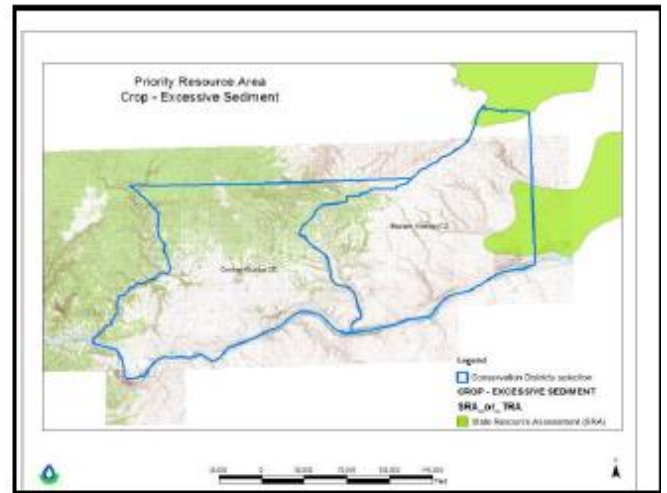
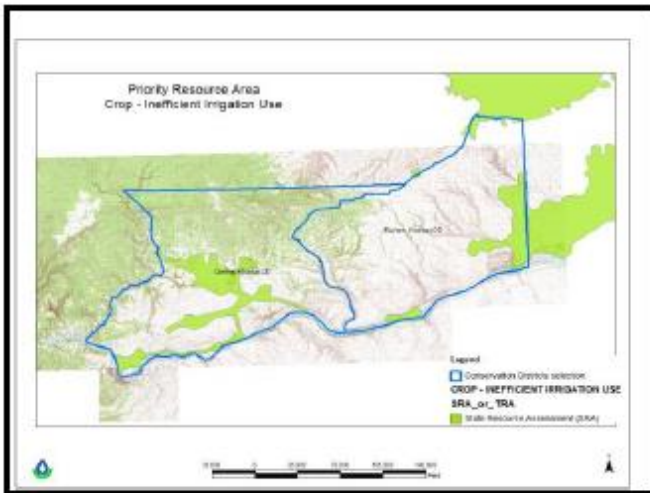
State Resource Assessment

- SRA is intended to be updated and refined as more resources are available and information is learned
- SRA can be used with partners to identify key areas where collaboration of resources can result better treatment of resource concerns and have bigger impact
- Sharing of data sets among partners can improve the SRA and make it more applicable at the local level

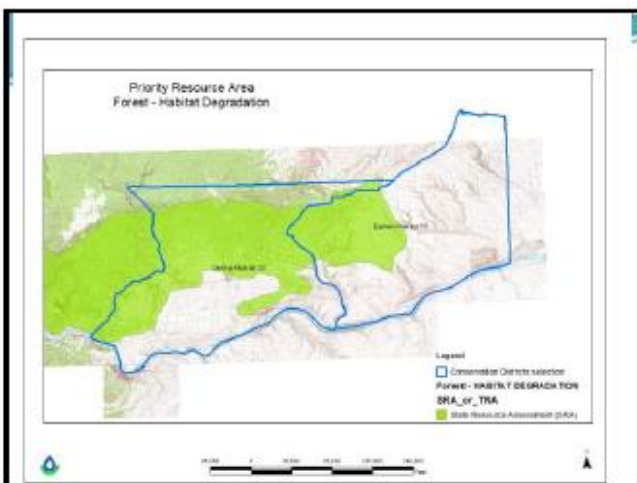
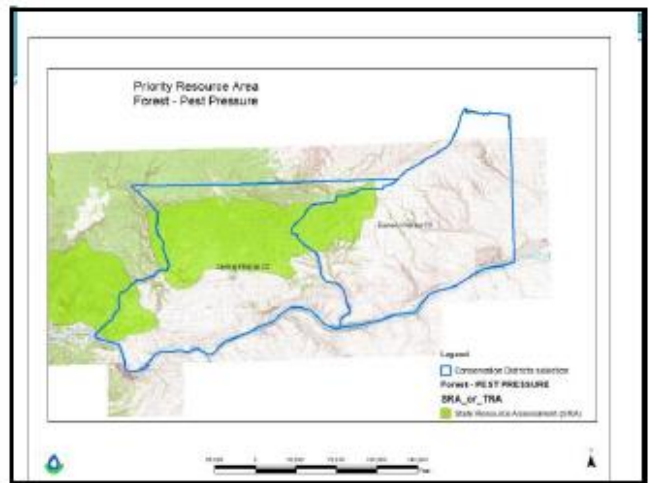
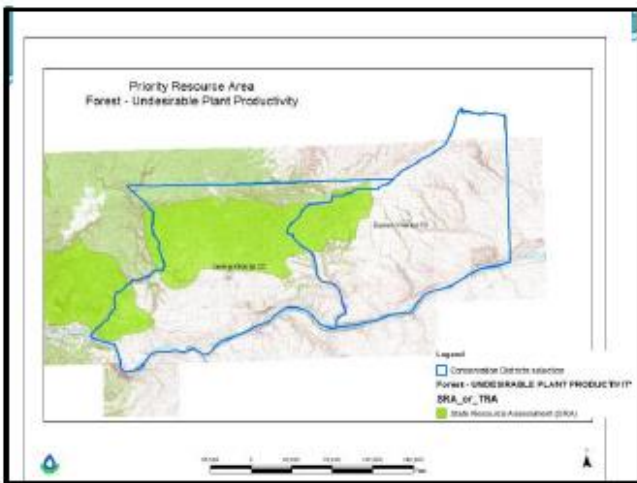
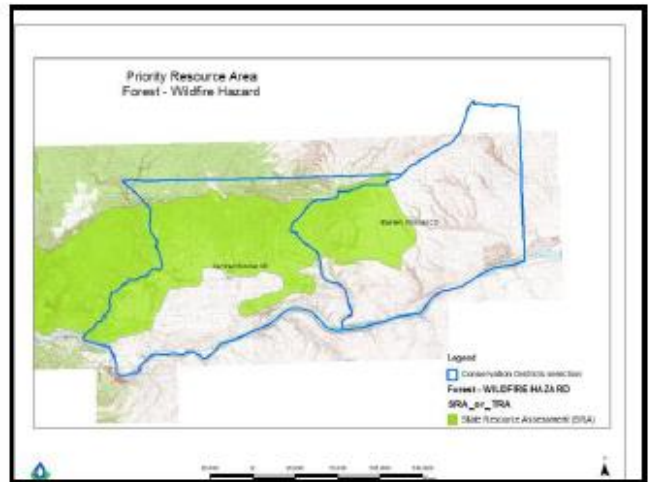
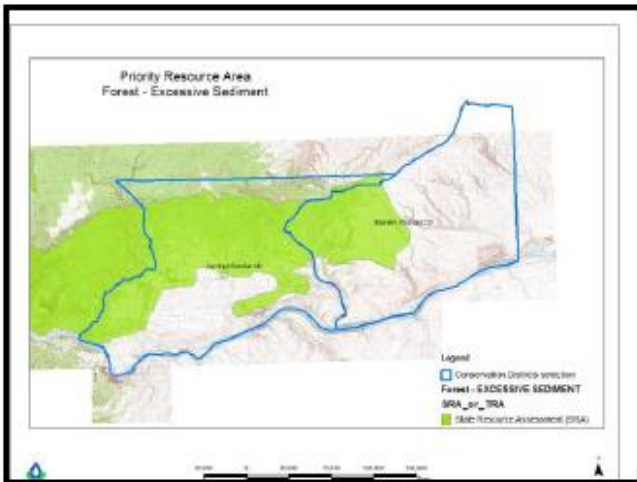
Resource Priority Areas occurring in Klickitat County

- Crop – Wind, Sheet and Rill Erosion
- Crop – Inefficient Irrigation Use
- Crop – Excessive Sediment
- Crop – Pesticides Transported
- Crop – Excess Nutrients



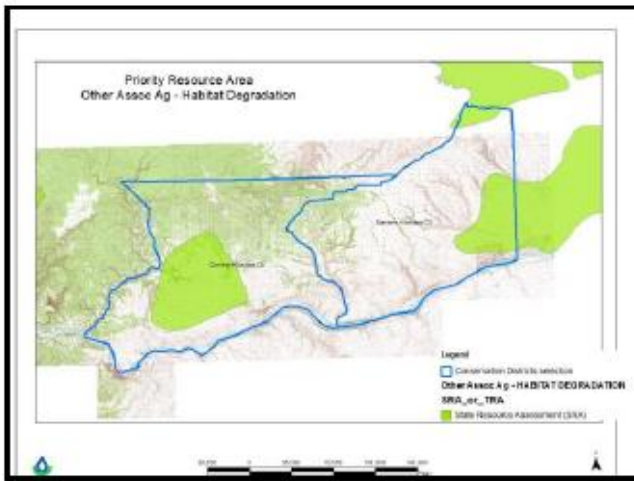
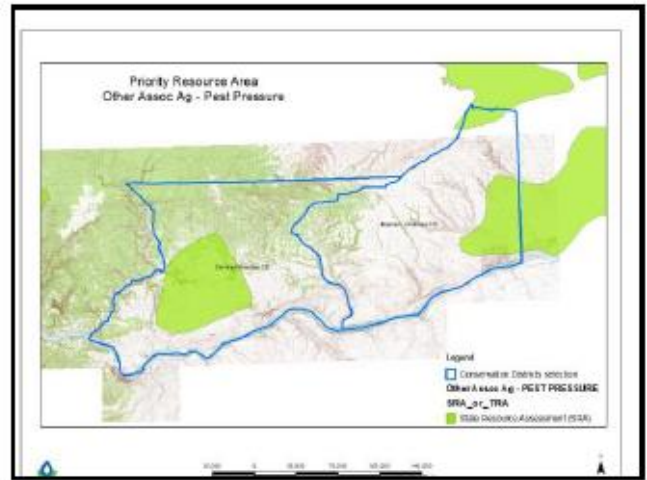
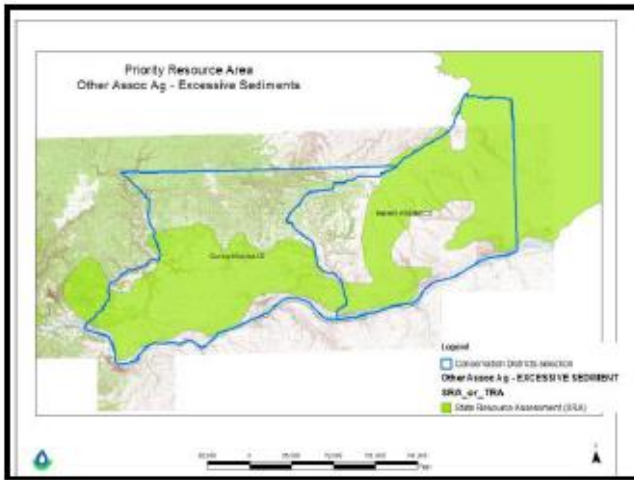


- ### Resource Priority Areas occurring in Klickitat County
- Forest – Excessive Sediment
 - Forest – Wildfire Hazard
 - Forest – Undesirable Plant Productivity
 - Forest – Pest Pressure
 - Forest – Habitat Degradation



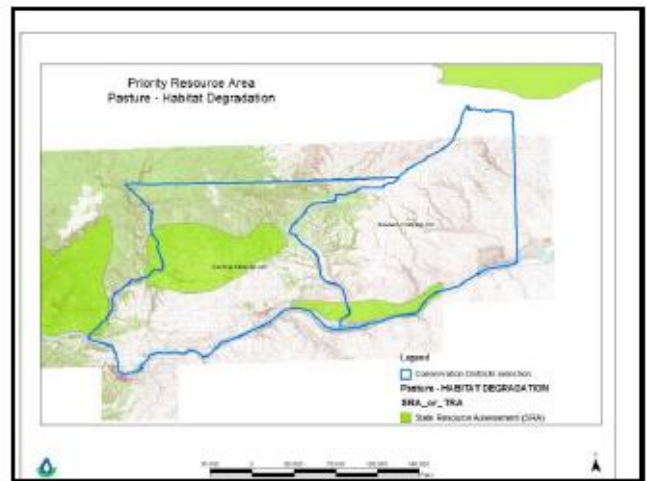
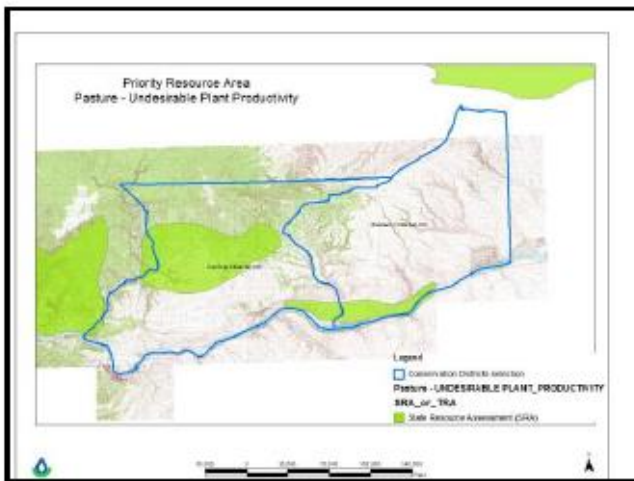
Resource Priority Areas occurring in Klickitat County

- Other Associated Ag Land – Excessive Sediment
- Other Associated Ag Land – Pest Pressure
- Other Associated Ag Land – Habitat Degradation



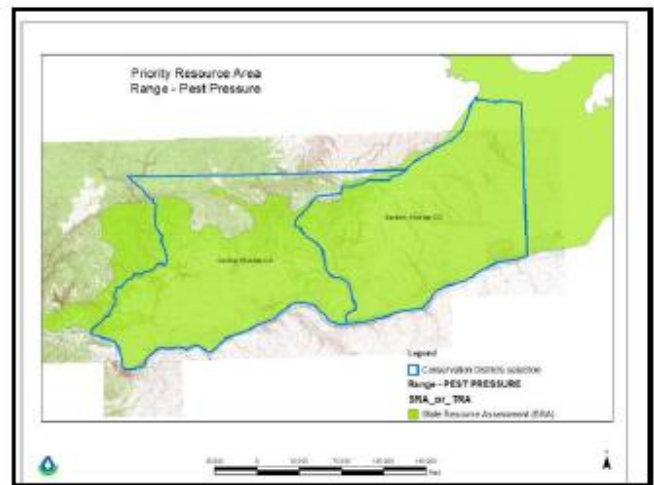
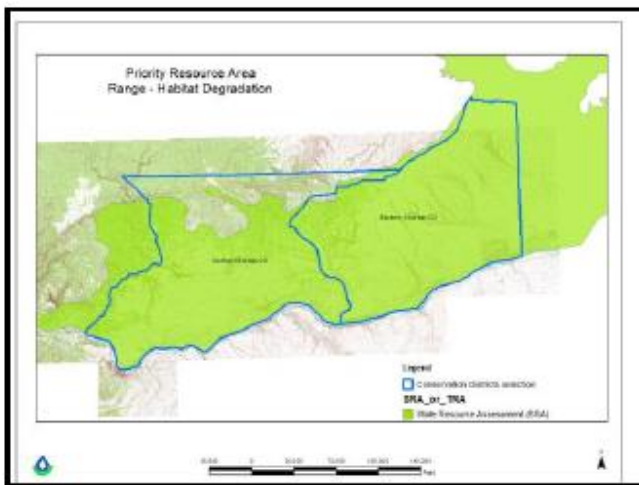
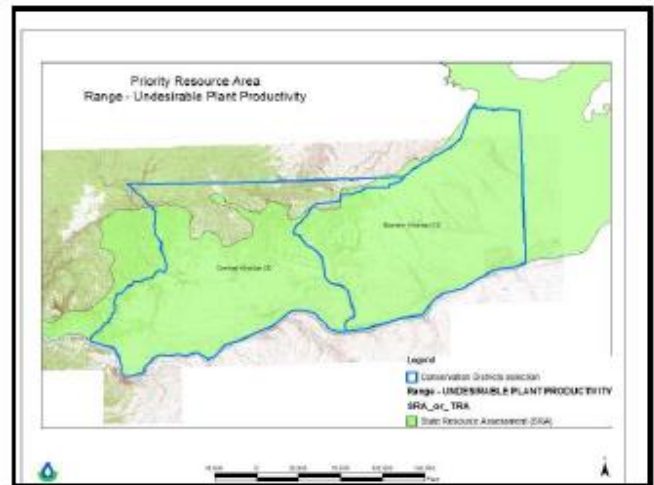
Resource Priority Areas occurring in Klickitat County

- Pasture – Undesirable Plant Productivity
- Pasture – Habitat Degradation



Resource Priority Areas occurring in Klickitat County

- Range – Undesirable Plant Productivity
- Range – Habitat Degradation
- Range – Pest Pressure



Appendix B Critical Geographic Areas

